



Annie

Height 179 cm / 5'10.5" Chest 80 cm / 31.5" Waist 61 cm / 24" Hips 90 cm / 35.5" Shoe 40 eu / 9 us

GLAMZMODEL



Annie

Height 179 cm / 5'10.5" Chest 80 cm / 31.5" Waist 61 cm / 24" Hips 90 cm / 35.5" Shoe 40 eu / 9 us

GLAMZMODEL



Annie

Height 179 cm / 5'10.5" Chest 80 cm / 31.5" Waist 61 cm / 24" Hips 90 cm / 35.5" Shoe 40 eu / 9 us

GLAMZMODEL



Annie

Height 179 cm / 5'10.5" Chest 80 cm / 31.5" Waist 61 cm / 24" Hips 90 cm / 35.5" Shoe 40 eu / 9 us

GLAMZMODEL



Annie

Height 179 cm / 5'10.5" Chest 80 cm / 31.5" Waist 61 cm / 24" Hips 90 cm / 35.5" Shoe 40 eu / 9 us

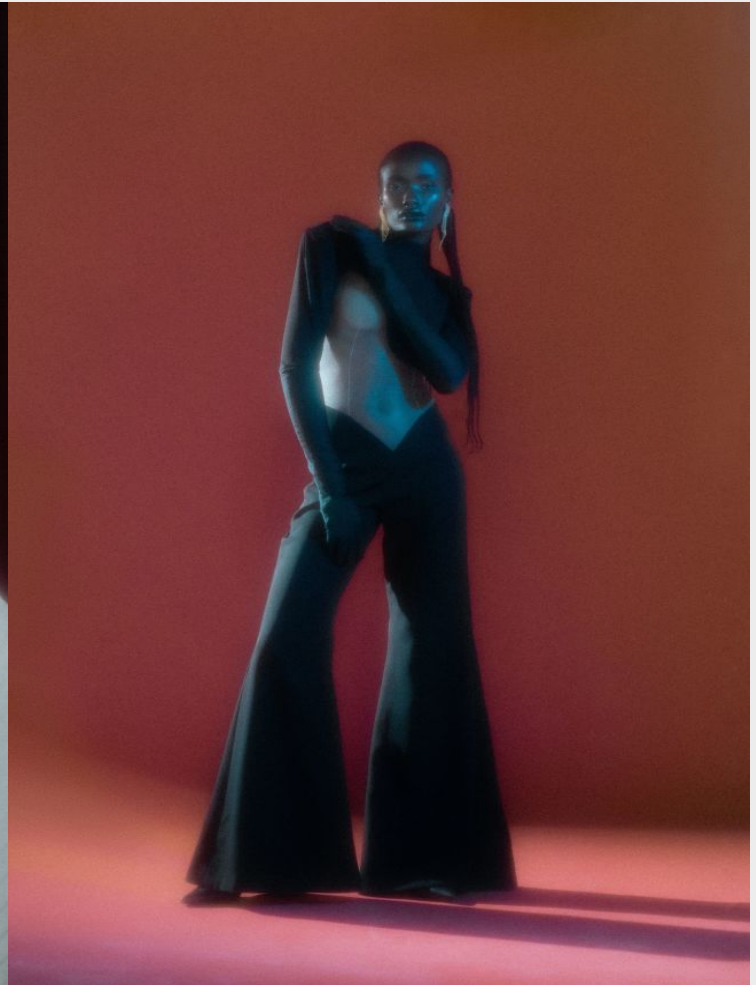
GLAMZMODEL



Annie

Height 179 cm / 5'10.5" Chest 80 cm / 31.5" Waist 61 cm / 24" Hips 90 cm / 35.5" Shoe 40 eu / 9 us

GLAMZMODEL



Annie

Height 179 cm / 5'10.5" Chest 80 cm / 31.5" Waist 61 cm / 24" Hips 90 cm / 35.5" Shoe 40 eu / 9 us

GLAMZMODEL



Annie

Height 179 cm / 5'10.5" Chest 80 cm / 31.5" Waist 61 cm / 24" Hips 90 cm / 35.5" Shoe 40 eu / 9 us

GLAMZMODEL



coat: Kenzo
sweatshirt: Lacoste
trousers: 8 By YOCK
glasses: Tom Ford
ha: StyleIt's own



CUT OUT ESSENTIALS

OUR LOVE FOR CUT OUT DETAILS

Annie

Height 179 cm / 5'10.5" Chest 80 cm / 31.5" Waist 61 cm / 24" Hips 90 cm / 35.5" Shoe 40 eu / 9 us

GLAMZMODEL



Annie

Height 179 cm / 5'10.5" Chest 80 cm / 31.5" Waist 61 cm / 24" Hips 90 cm / 35.5" Shoe 40 eu / 9 us

GLAMZMODEL